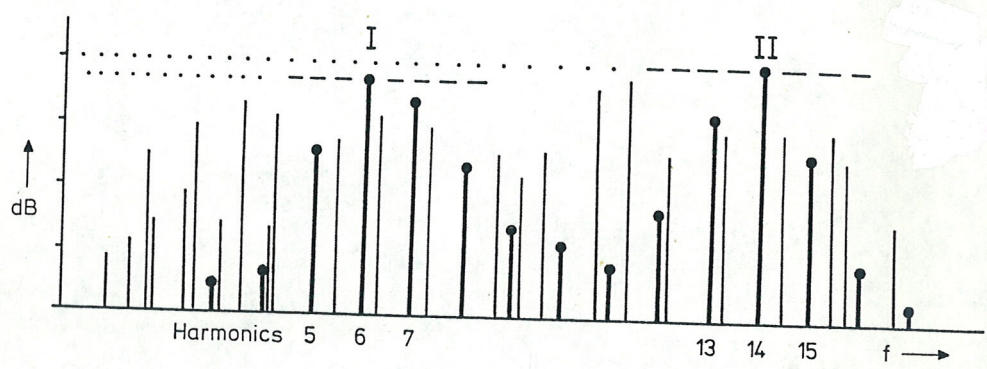
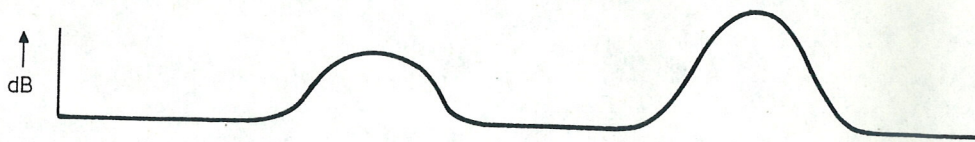
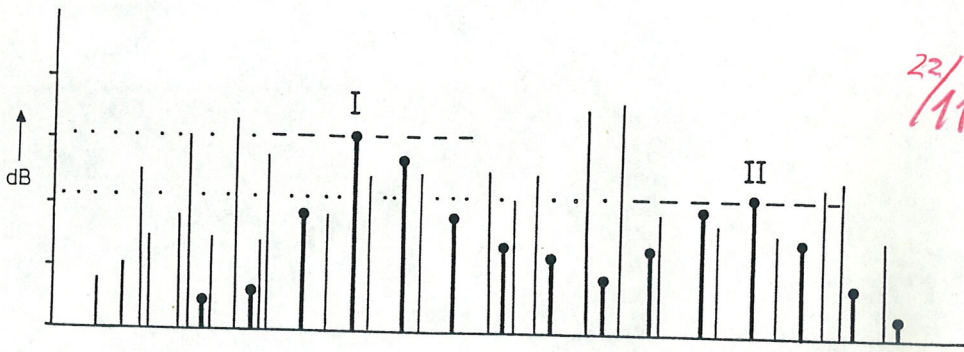


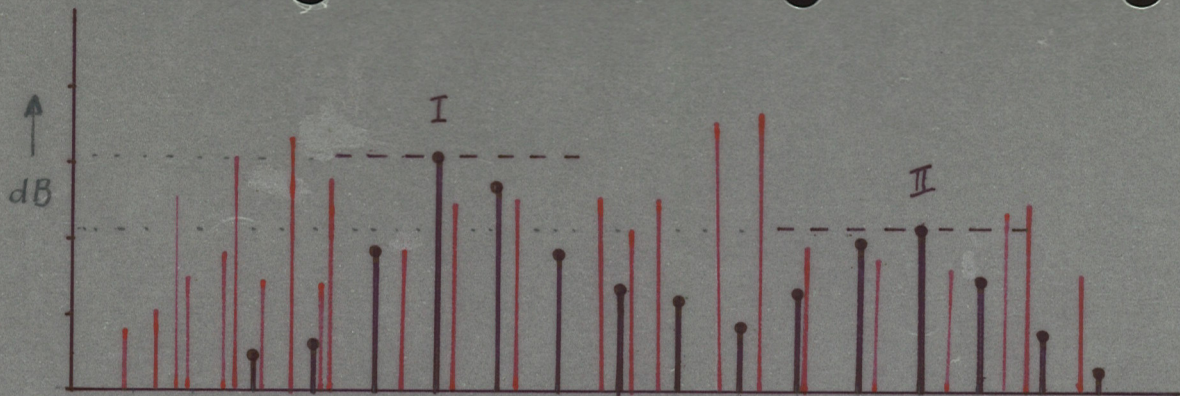
Biehl, Richard

Über die Beziehungen zw. elektr. u.
mechan. Kletterzeugung.
Zur Frage eines Keff-Intervall-Zirkels.

1953 ~~Frequenz 5,~~ Zs.f. angew. Physik 5, 231-237,
S. 232

22/11





Dia
22/11

Abstfel. ↓

