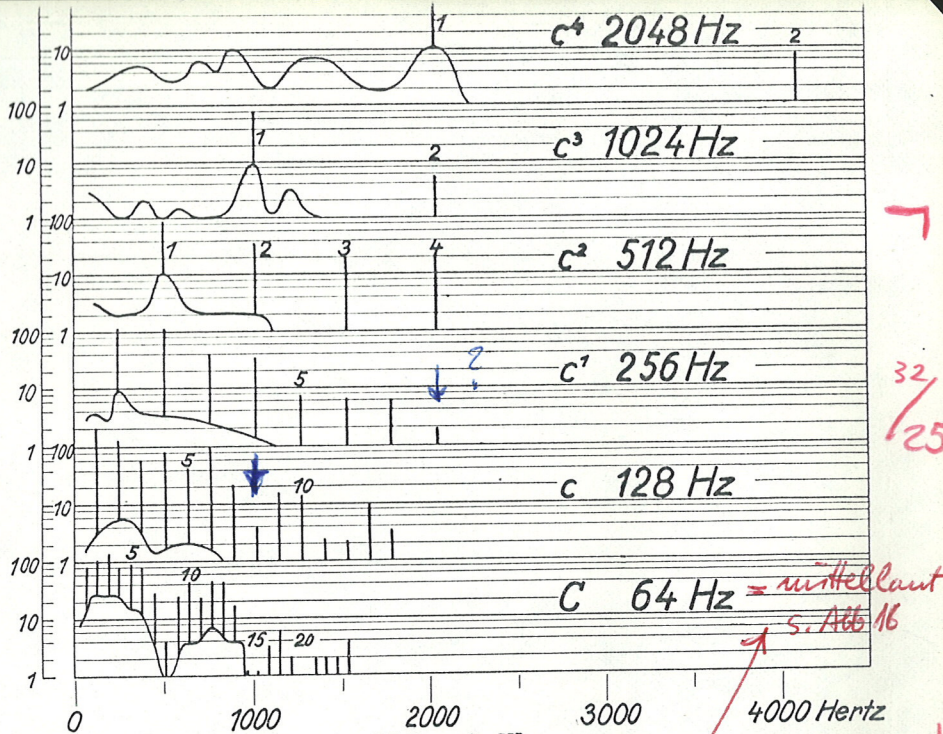


14 [746]



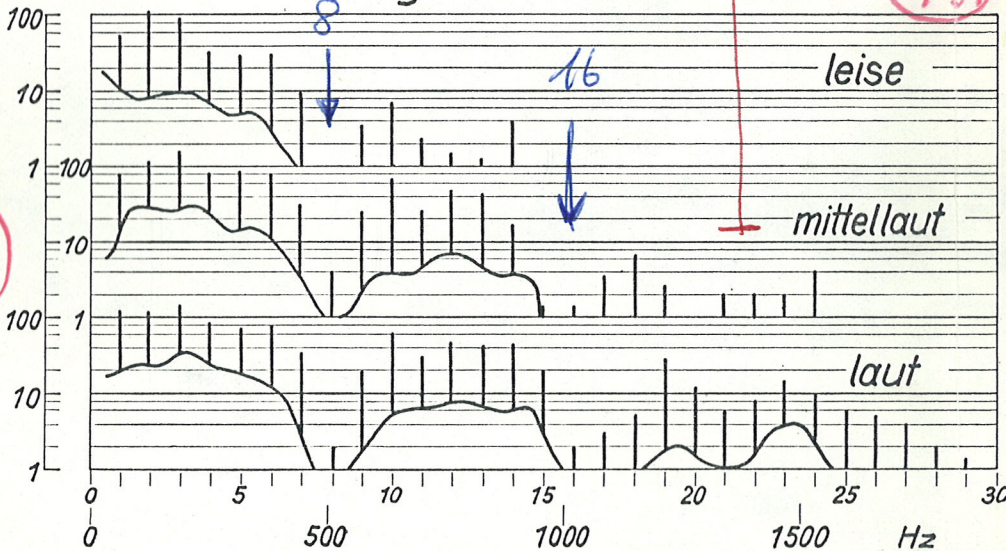
32/25

32/25

E. Meyer & R. Buchmann Flügel III
1931 Blue

Abb. 15. Flügelaufnahmen.

Flügel C (64Hz)



21/31

21/31

Abb. 16. Flügelspektrum in Abhängigkeit von der Anschlagstärke.

↑
Dbl. Dia ohne Legende = 32/26

Voc

Dia
 22/20

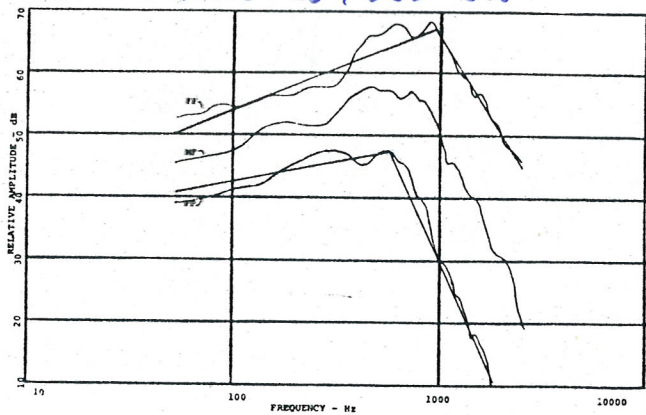
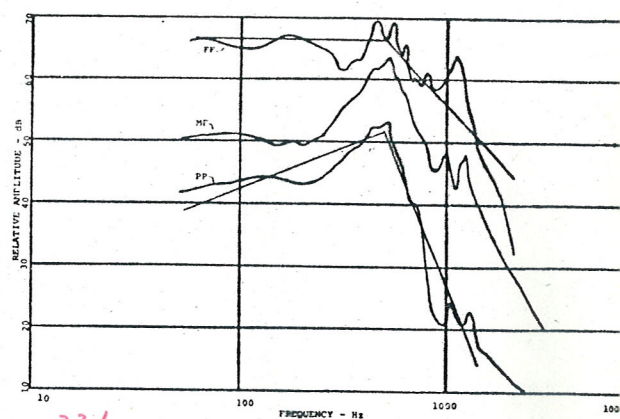


Fig. 2. Trombone spectral envelope.



22/24 Fig. 6. Bassoon spectral envelope.

Dia
 22/21

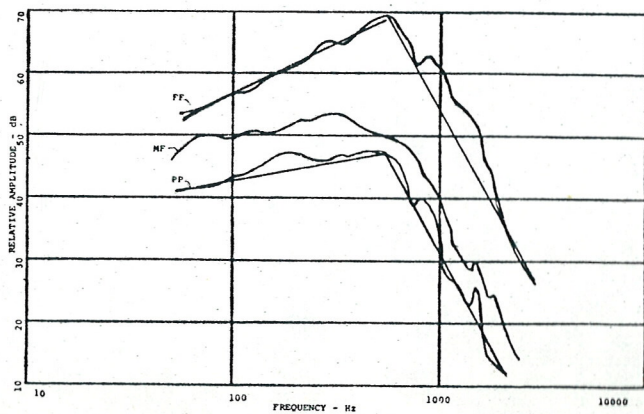
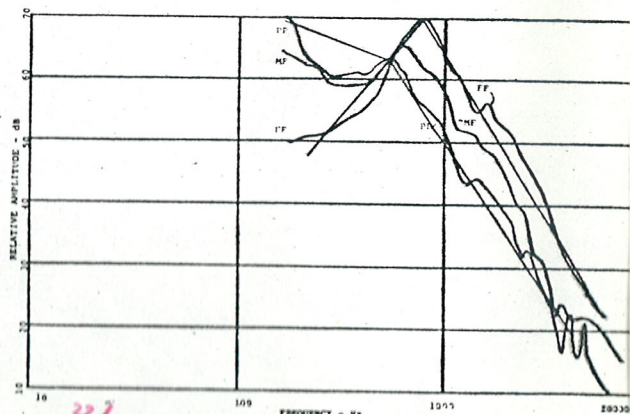


Fig. 3. French horn spectral envelope.



22/25 Fig. 7. Flute spectral envelope.

Dia
 22/22

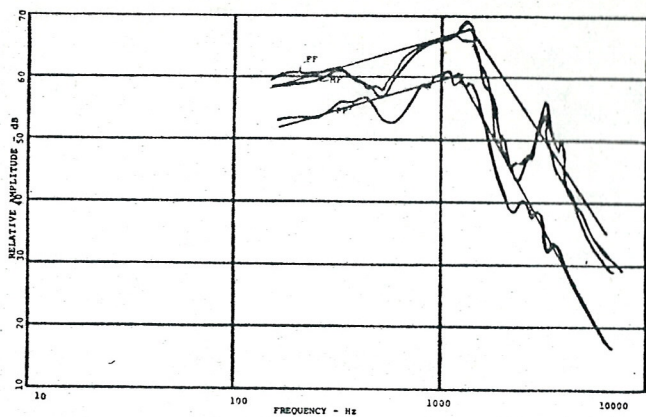
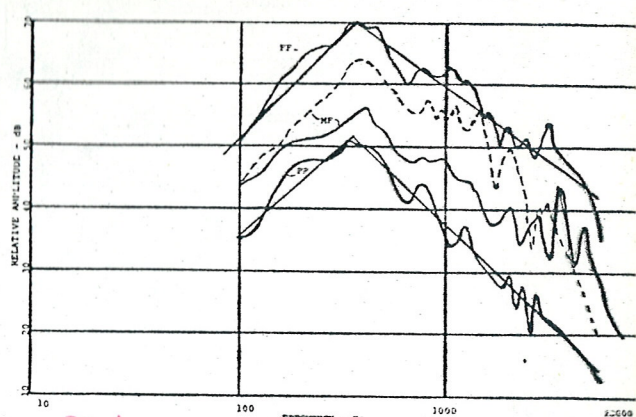


Fig. 4. Oboe spectral envelope.



22/26 Fig. 8. Violin spectral envelope.

Dia
 22/23

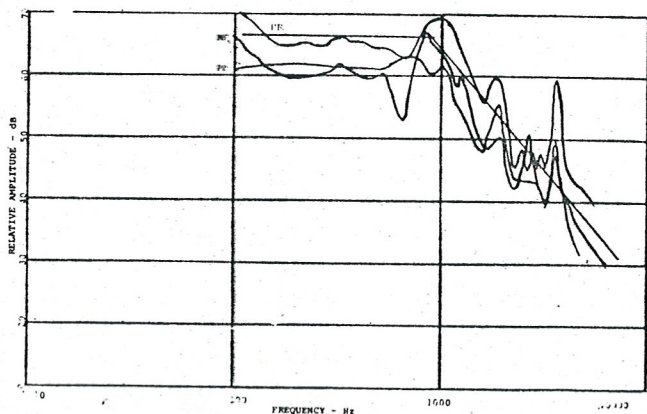
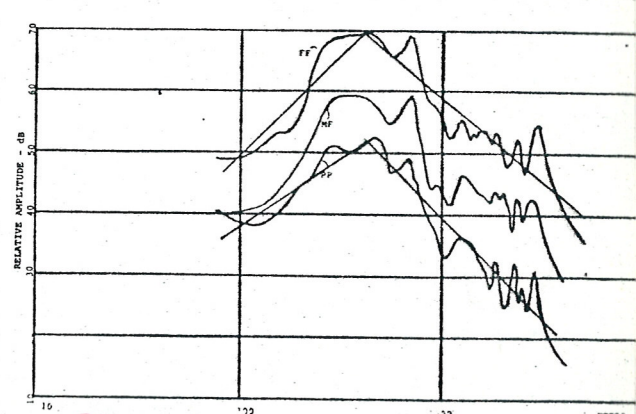


Fig. 5. English horn spectral envelope.



22/27 Fig. 9. Viola spectral envelope.