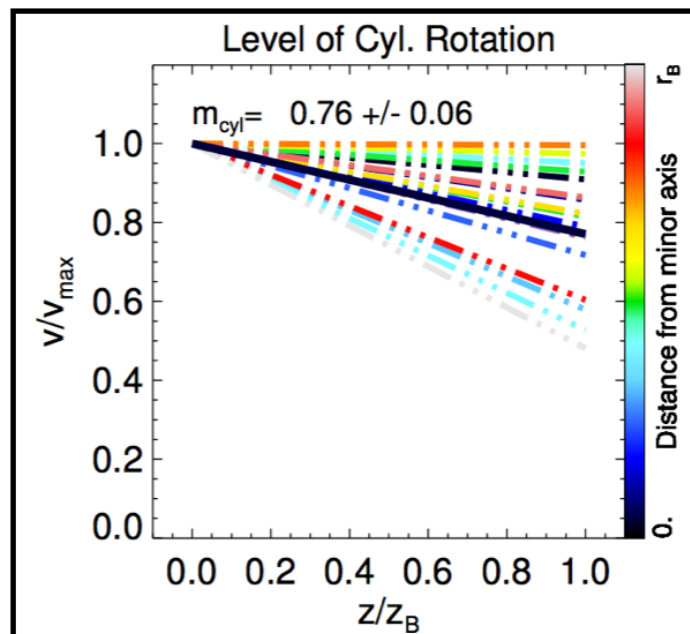
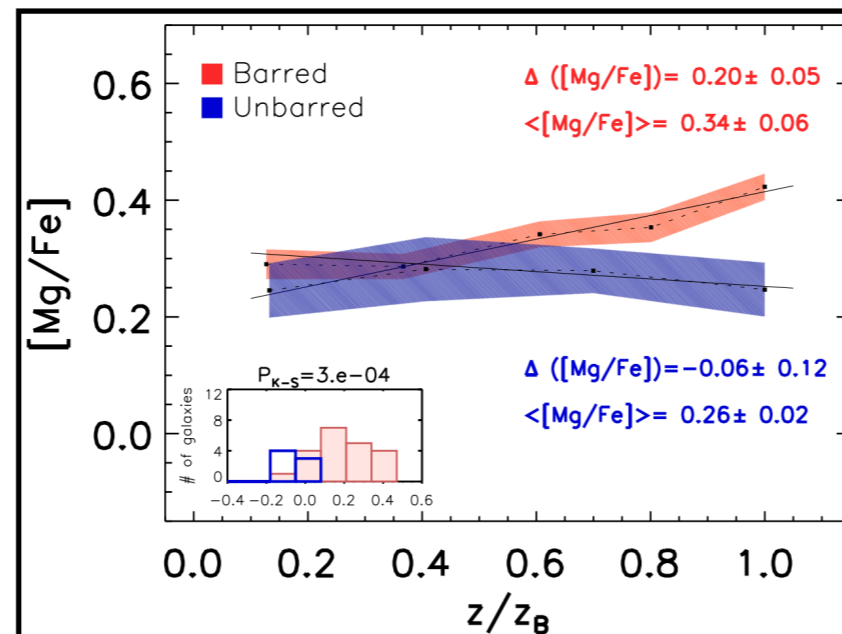


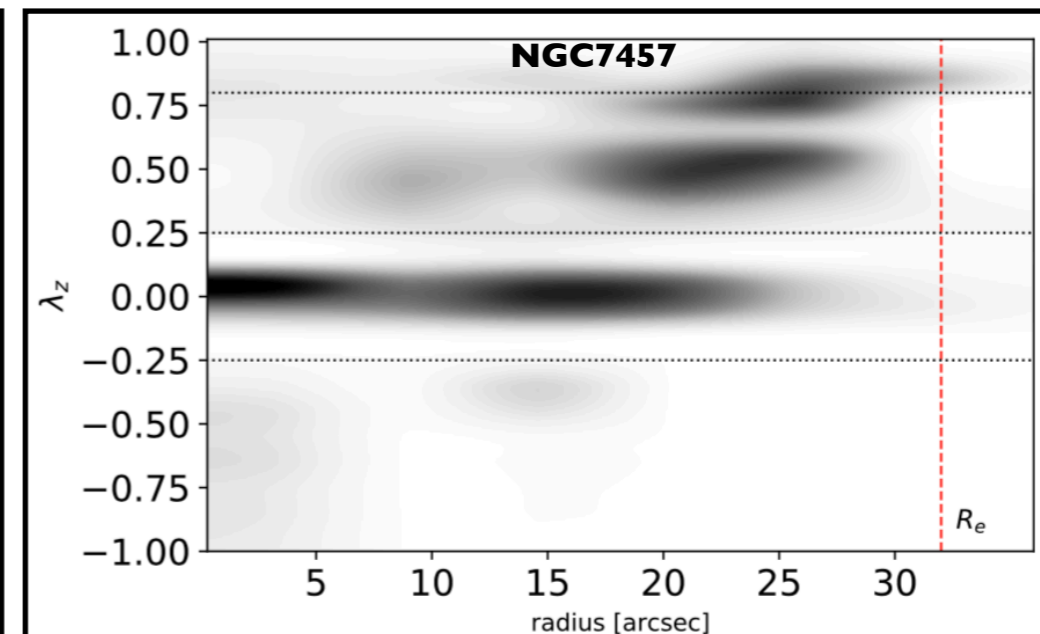
- Postdoctoral researcher, Instituto de Astrofísica de Canarias (IAC)
- Science Processing and Analysis team (WEAVE Survey)
- Research interests:
 - Structure and evolution of galaxies (barred galaxies and bulges), galaxy groups and clusters
 - Astronomical data analysis/reduction techniques, including: MOS and IFU spectroscopy, optical imaging, astronomical (optical) data reduction/analysis pipelines and astronomical databases
 - Astronomical instrumentation, including: Multi-fibre & IFU spectroscopy, observatory automation and robotic telescopes.



Molaeinezhad et al. 2016



Molaeinezhad et al. 2017



Molaeinezhad et al. 2019